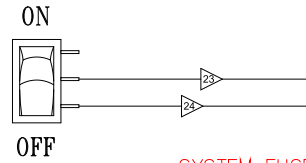
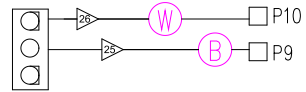


Light Receptacle



SYSTEM FUSE



PUMP 1 FUSE



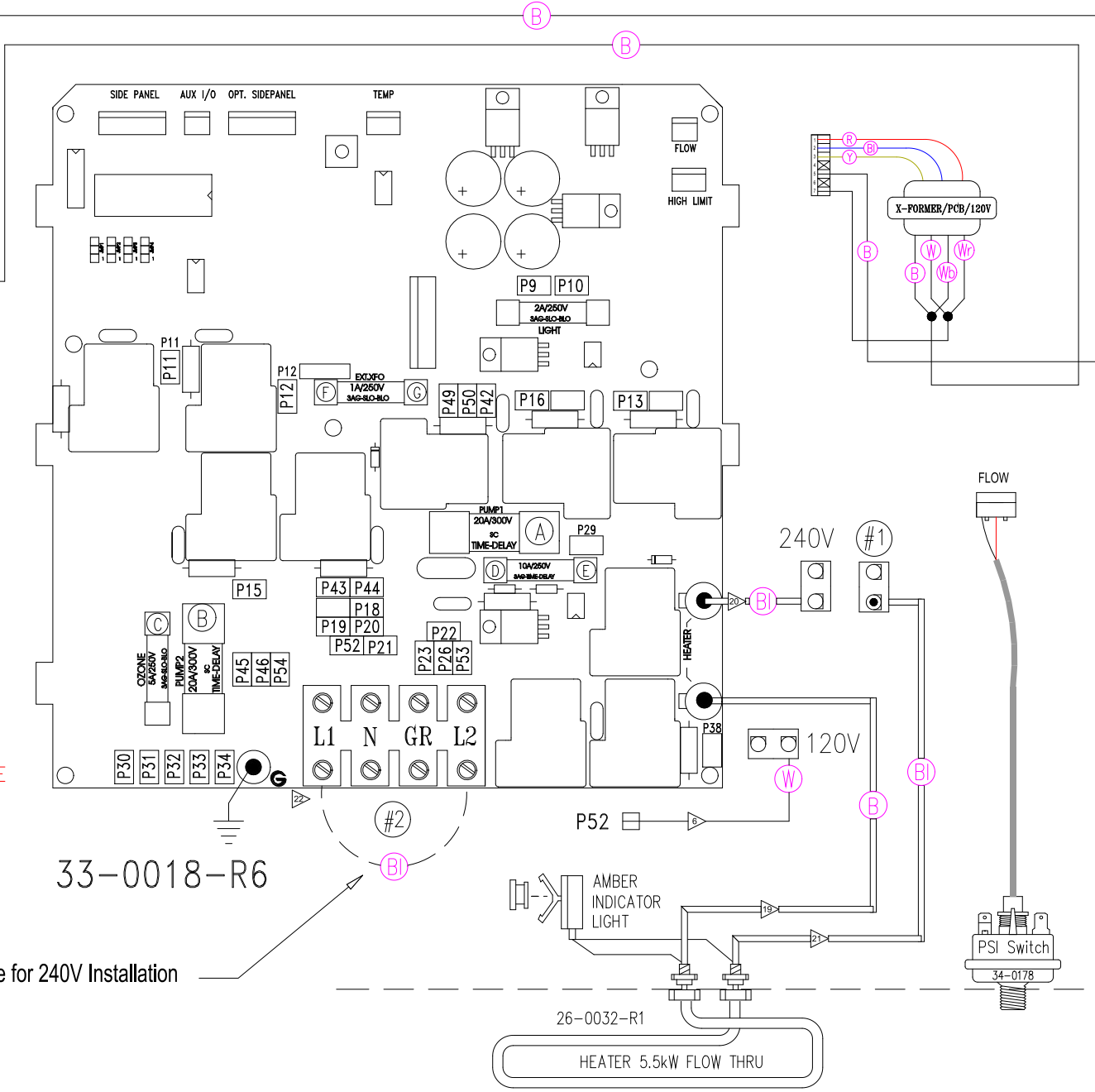
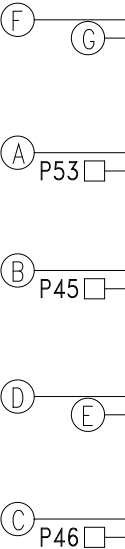
PUMP 2 FUSE



AIR BLOWER FUSE

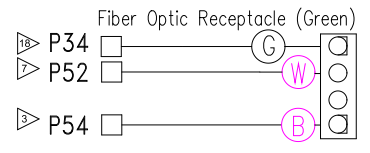
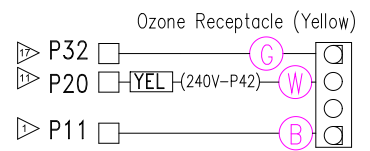
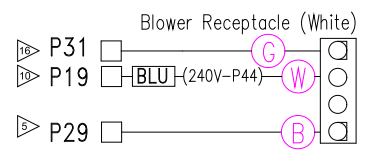
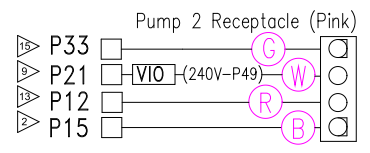
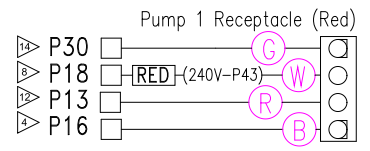


CIRC./OZONE FUSE



33-0018-R6

Remove for 240V Installation



LEGEND	
	- 1/4" QUICK CONNECT
	- 1/4" PIGGYBACK
	- FORK CONNECTOR
	- RING CONNECTOR
	- SOCKET CONNECTOR
	- PIN CONNECTOR

**HYDRO-QUIP**  
CORONA, CA (909) 273-7575

Manufacture Notes: EX: **RED** - DENOTES THE COLOR OF HEAT SHRINK USED.

Approved By:

Dwg. No. **H556A0-DKPQY8**

Drawn BH Rev 14 Date 08.06.03

Wire Color Code

For 120V Operation:

- a) Install Heater plug (#1) into receptacle labeled 120V
- b) Jumper (#2) must be installed on all 120V installations

For 240V Operation:

- a) Separate Lines 1 & 2 (Remove Jumper #2)
- b) Install Heater plug (#1) into receptacle labeled 240V

Diagram No. **6200**

B - Black	G - Green
Br - Brown	Bl - Blue
R - Red	V - Violet
O - Orange	W - White
Y - Yellow	Gr - Gray